

# SCHEDULE "A"

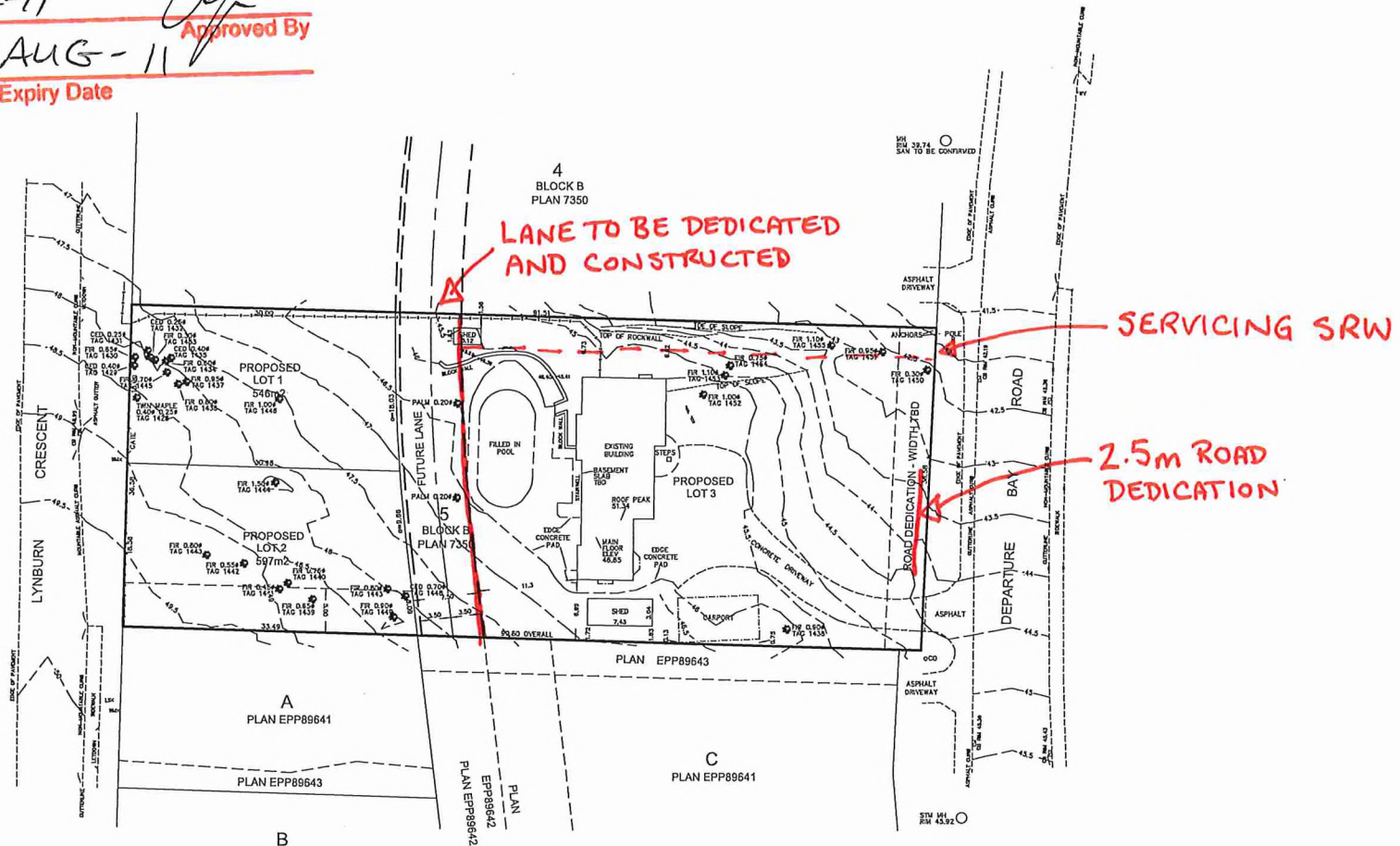
## CITY OF NANAIMO PRELIMINARY LAYOUT ACCEPTANCE

**SITE PLAN**  
VINH LONG BUI  
C/O MARK PATERSON  
LOT 5, BLOCK B, SECTION 19,  
RANGE 8, MOUNTAIN DISTRICT,  
AND OF SECTION 1, NANAIMO  
DISTRICT, PLAN 7350  
ADDRESS: 2333 DEPARTURE BAY ROAD  
NANAIMO, BC  
PROJECT SURVEYOR: JAMES R. ENDRIS  
DRAWN BY: JRS DATE: AUG 25/21  
OUR FILE: 90155 REVISION:

2022-AUG-11  
Date 2023-AUG-11 Approved By *[Signature]*  
Expiry Date

**JEA** J.E. ANDERSON  
S.S. ASSOCIATES  
SURVEYORS - ENGINEERS  
1A-2411 DEWITT ROAD, NANAIMO, B.C. V9T 2H1  
TEL: 250-758-4021 FAX: 250-758-4550  
EMAIL: jander@jeaassociates.com  
NANAIMO - VICTORIA - PRINCEGEORGE - CAMBELL RIVER

**LEGEND**  
ALL DIMENSIONS ARE IN METRES  
SUBJECT TO CHARGES SHOWN  
ON TITLE NO. C8482414  
(P.L.S. 000-715-892)  
DIMENSIONS ARE DERIVED FROM  
LAND TITLE OFFICE RECORDS  
THIS PLAN HAS BEEN PREPARED IN  
ACCORDANCE WITH THE PROFESSIONAL  
REFERENCE MANUAL  
ELEVATIONS ARE GEODETIC AND ARE DERIVED  
FROM GEODETIC CONTROL POINTMENT 3478  
ELEVATION = 52.113m



54801457

The intended plot size of this plan is 864m by 410m by 260m in height (0.42) when plotted at a scale of 1:250.

J.E. ANDERSON & ASSOCIATES  
B.C. Land Surveyors - Consulting Engineers  
Victoria - Nanaimo - Parksville - Campbell River, B.C.  
File: 90155